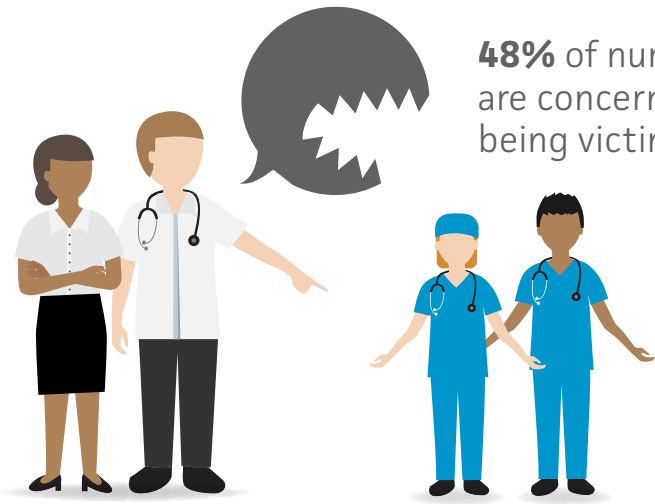


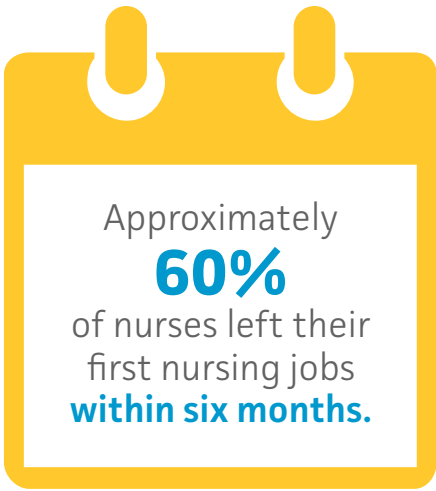
Many nurses choose their profession because they care about the wellbeing of others. However, we recently discovered nearly half of the nurses we talked to are often not being treated with the same respect they give to others.

THE BULLY EFFECT

Working in a hostile environment and being a victim of workplace bullying is a significant concern for many.



48% of nurses say they are concerned about being victims of bullying.

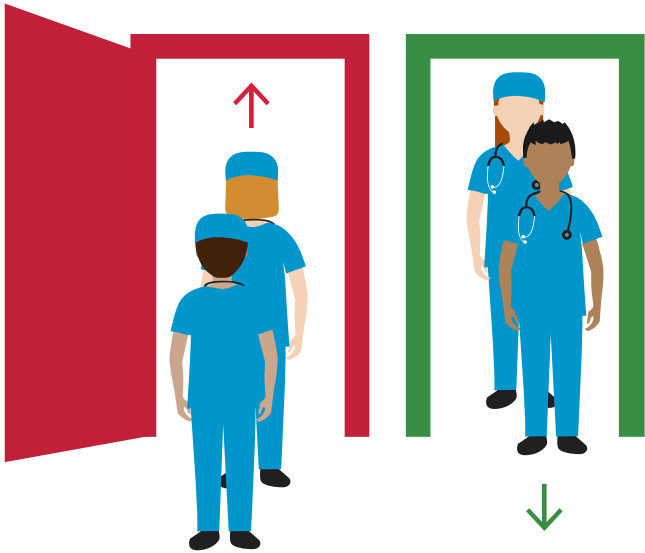


**A TOUGH PILL
TO SWALLOW**



39% personally knew nurses who were victims of bullying.

THE COST OF CARE



Medical providers' financial costs can range between **\$22,000 to over \$64,400** per turnover.

79% of nursing school graduates think nursing schools should provide workshops and special training about handling workplace bullies.



HOW TO REACT



Remain confident.



Be professional.



Confront the bully.



Report bullying behaviors.



Advocate for peer-to-peer accountability.